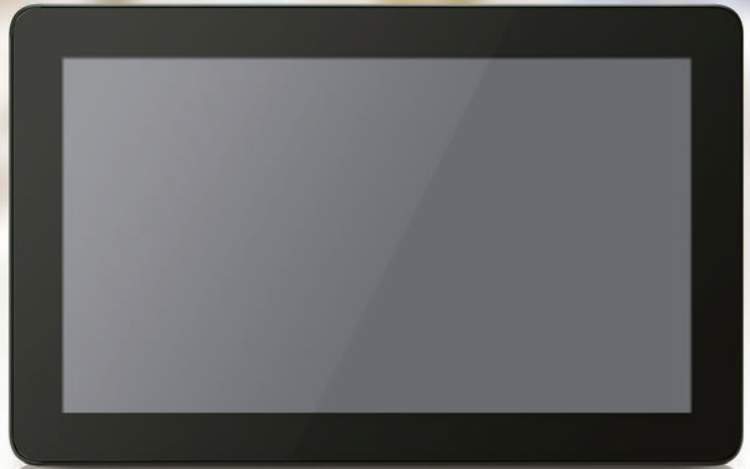


D151-11KS

15.6" Touch Panel PC

Powered by Intel Kabylake ULV Core-i CPU

D151 series is a 15.6" ultra-thin wide-screen fanless Panel PC featuring Intel Kabylake ULV Core-i CPU. The distinct aluminum extrusion frame with matte black or silver finish gives the system an understated luxury and elegant look. The series also featuring a bright TFT-LCD with LED backlight display and true flat 10-point projective capacitive multi-touch front panel that's IP65 compliant, along with optional universal snap-in peripherals (MSR, Smart card reader, NFC / RFID reader, barcode scanner, camera), making it perfect for diversified self-service and interactive signage markets including retail, hospitality, gaming, corporate, healthcare and light industrial applications.



Peripheral Options



Magnet Strip Reader



Smart Card and
Magnetic Stripe Reader



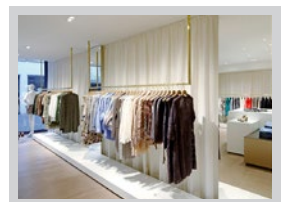
RFID Reader



Barcode Scanner



5MP Camera



D151-11KS

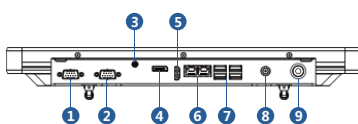
15.6" Touch Panel PC

Powered by Intel Kabylake ULV Core-i CPU

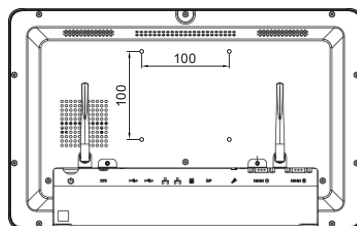


Model Name	D151-11KS
Motherboard	PD11KS
Processor	Intel® Kaby Lake-U i3-7100U with integrated graphics (Compatible with Skylake 3955U / i3-6100U / i5-6300U / i7-6600U and Kabylake 3965U / i5-7300U / i7-7600U)
System Memory	2 x DDR4 SO-DIMM, support up to 32 GB
Processor Graphic	Intel® HD Graphics 620 (Graphics Burst Frequency 1.10 GHz)
Touch Display	
LCD Size	15.6" TFT LCD with LED Backlight 50000 lifetime
Brightness	500 nits
Resolution	1366 x 768
Viewing Angle	170° / 160°
Touch Screen	True-flat 10 points projective capacitive touch
Storage	
HDD/SSD	1 x 2.5 internal HDD / SSD bay
Expansion	
M.2 (2230)	1 x M.2 E key for wireless network
mPCIe	1 x full length mPCIe supporting mSATA
I/O Ports	
DC Jack	1 (8V to 24V wide-range voltage input)
USB3.0	4
GigaLAN (10/100/1000)	2
Display-Port (support 4K 3840x2160)	1
Audio jack	1 x combo jack w/mic-in and line-out
HDMI-out (support 4K 3840x2160)	1
Serial Port	1 x RS-232, 1 x RS-232/422/485
Thermal Solution	
Thermal Solution	Fanless
Audio	
Stereo Speaker	2W x 2
Power	
Power Supply	65W / 19V
Certification	
EMC & Safety	CE / FCC Class A
Environment	
Operating Temperature	0°C~40°C (32°F~104°F)
Storage Temperature	-20°C~60°C (-4°F~140°F)
Relative Humidity	10%~95% @40°C non-condensing
Front Panel Protection	IP65 Compliant
Dimension	400 x 250 x 44 (mm)
Weight	4.8kg (10.58 lb)
Mounting	100mm x 100mm VESA
Operating System	Skylake: win7, win8.1, win10, linux support by request Kabylake: win10, linux support by request

I/O Drawing



- 1. RS-232/422/485
- 2. RS-232
- 3. Audio jack
- 4. DP
- 5. HDMI-out
- 6. 2 x LAN
- 7. 4 x USB3.0
- 8. DC input
- 9. Power Button



Dimensions

